

## ENDURANCE EVOLUTION

### DESIGNED FOR


PROTECTION

COMFORT

GRIP

### HIGHLIGHTS

**SMARTEVO AS**  
COMPOUND

 Made of more than  
50% of bio-based  
and recycled materials

 FSC FSC® N003618

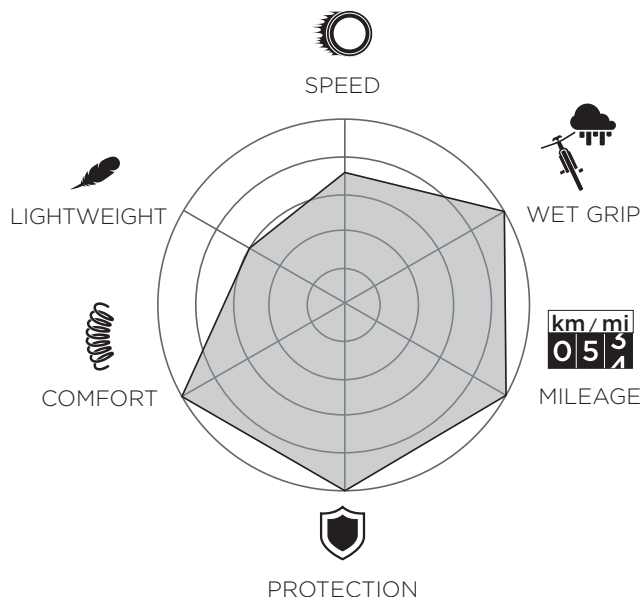


### DESCRIPTION

Cinturato EVO TLR is the latest evolution of our all-road model, from road to gravel, designed to excel in all weather and surfaces. It features the SmartEVO AS compound, an advanced rubber formulation that blends performances such as grip, smoothness and durability, with more than 50% of recycled and bio-based materials, with its natural rubber content all FSC™-certified\*. This cutting-edge compound ensures exceptional grip across all seasons and a multitude of surfaces, while also minimizing vibrations and enhancing comfort and handling as a whole. Its tubeless-ready construction with multiple layers of puncture protection rounds it up, enhancing puncture protection and enabling the Cinturato EVO to let you conquer paths that range from normal roads to tougher gravel ones with ease.

\*depending on the size, its percentage on total weight may vary. Check our website for more details.

### CHARACTERISTICS



### APPLICATIONS



### SEASONALITY (☀ & ☁)



☐ NOT INTENDED USE  
☐ POSSIBLE USE  
☒ INTENDED USE

# TECH OVERVIEW

## 1 COMPOUND



**SMARTEVO AS**  
COMPOUND

Our best all-season rubber compound, formulated for grip, comfort and mileage, also made with recycled and bio-based materials.

**GRIP, COMFORT AND DURABILITY IN ALL WEATHER AND ROAD CONDITIONS**

## 2 STRUCTURE



**TECHWALL+ ROAD**

High performing tubeless ready casing structure with multiple layers of reinforcement, developed to provide best puncture protection at yet a flexible construction for tougher road conditions.

**BEST PUNCTURE PROTECTION AND RELIABILITY FOR ALL ROAD CONDITIONS**

## 3 MOUNTING & SIZING

### CINTURATO™ EVO TLR 28-622

Nominal size measured @ 6,5 bar/94 PSI

ETRTO RIM	WIDTH [mm]	OD [mm]
19 C	28	686
21 C	29	686
23 C	30	686

### CINTURATO™ EVO TLR 30-622

Nominal size measured @ 6 bar/87 PSI

ETRTO RIM	WIDTH [mm]	OD [mm]
21 C	30	688
23 C	31	688
25 C	32	688

### CINTURATO™ EVO TLR 32-622

Nominal size measured @ 5,5 bar/80 PSI

ETRTO RIM	WIDTH [mm]	OD [mm]
21 C	32	693
23 C	33	693
25 C	34	693

### CINTURATO™ EVO TLR 35-622

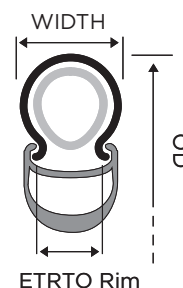
Nominal size measured @ 5 bar/73 PSI

ETRTO RIM	WIDTH [mm]	OD [mm]
21 C	34	698
23 C	35	698
25 C	36	698

### CINTURATO™ EVO TLR 40-622

Nominal size measured @ 4,5 bar/65 PSI

ETRTO RIM	WIDTH [mm]	OD [mm]
21 C	39	710
23 C	40	710
25 C	41	710



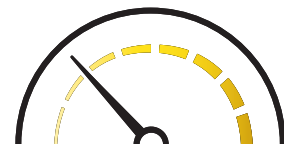
Rim compatibility developed under ETRTO standards: **carefully check your rim width before use.**

DESCRIPTION	RIM	IPCODE	CASING	TECHNOLOGY	WEIGHT(g)	COMPOUND
Cinturato EVO TLR 28-622	19C	4142700	60 tpi, TLR	TechWALL+	350	SmartEVO AS
Cinturato EVO TLR 30-622	21C	4686400	60 tpi, TLR	TechWALL+	380	SmartEVO AS
Cinturato EVO TLR 32-622	21C	4142800	60 tpi, TLR	TechWALL+	410	SmartEVO AS
Cinturato EVO TLR 35-622	23C	4142900	60 tpi, TLR	TechWALL+	450	SmartEVO AS
Cinturato EVO TLR 40-622	23C	4143000	60 tpi, TLR	TechWALL+	490	SmartEVO AS

Product details of the sizes 45-622, 50-622 and 55-622 will be provided soon.

# FINE TUNE YOUR PERFORMANCE

## RECOMMENDED PRESSURE CHART



### CINTURATO™ EVO TLR 28-622

Rider Weight (Kg)	Pressure (bar)	Pressure (PSI)
≤ 50	4,2	61
51 - 57	4,4	64
58 - 65	4,7	68
66 - 73	5	73
74 - 81	5,3	77
82 - 88	5,5	80
≥ 89	5,7	83

MAX PRESSURE 6,5 bar | Rim 21 C/TC - MAX PRESSURE 5 bar | Rim 21 SS/TSS

on RIM 23 C/TC: drop 0,3 bar (4 PSI)

### CINTURATO™ EVO TLR 30-622

Rider Weight (Kg)	Pressure (bar)	Pressure (PSI)
≤ 50	4,1	59
51 - 57	4,3	62
58 - 65	4,5	65
66 - 73	4,7	68
74 - 81	4,9	71
82 - 88	5,1	74
≥ 89	5,4	78

MAX PRESSURE 6 bar | Rim 23 C/TC - MAX PRESSURE 4,5 bar | Rim 23 SS/TSS

on RIM 25 C/TC: drop 0,2 bar (3 PSI)

### CINTURATO™ EVO TLR 32-622

Rider Weight (Kg)	Pressure (bar)	Pressure (PSI)
≤ 50	3,8	55
51 - 57	4	58
58 - 65	4,2	61
66 - 73	4,5	65
74 - 81	4,7	68
82 - 88	4,9	71
≥ 89	5	73

MAX PRESSURE 5,5 bar | Rim 23 C/TC - MAX PRESSURE 4,5 bar | Rim 23 SS/TSS

on RIM 25 C/TC: drop 0,2 bar (3 PSI)

### CINTURATO™ EVO TLR 35-622

Rider Weight (Kg)	Pressure (bar)	Pressure (PSI)
≤ 50	3	44
51 - 57	3,2	46
58 - 65	3,4	49
66 - 73	3,6	52
74 - 81	3,8	55
82 - 88	4	58
≥ 89	4,2	61

MAX PRESSURE 5 bar | Rim 23 C/TC - MAX PRESSURE 4 bar - Rim 23 SS/TSS

on RIM 25 C/TC: drop 0,2 bar (3 PSI)


### CINTURATO™ EVO TLR 40-622


Rider Weight (Kg)	Pressure (bar)	Pressure (PSI)
≤ 50	2,8	41
51 - 57	2,9	42
58 - 65	3	44
66 - 73	3,1	45
74 - 81	3,3	48
82 - 88	3,4	49
≥ 89	3,6	52

MAX PRESSURE 4,5 bar | Rim 23 C/TC - MAX PRESSURE 3,5 bar | Rim 23 SS/TSS

on RIM 25 C/TC: drop 0,2 bar (3 PSI)

### DEPENDING ON RIDING STYLE

 **COMFORT>** DROP 0.3 bar / 5 psi on FRONT wheel

 **AGGRESSIVE>** keep same pressure front/rear

 **WET AND/OR COLD** road conditions  
(BELOW 7°/44F) drop 0.3 bar / 5 psi on BOTH wheels



Never exceed the maximum inflation pressures of either the rim and the tyre.